



HEXAGON

Assistant

General settings

FAQ
3 January 2023
Created with Version 13.0.5.1

Information about this document

All rights, including translation in foreign languages, are reserved. It is not allowed to reproduce any part of this document in any way without written permission of Hexagon.

Parts of this document may be automatically translated.

Document History

| Version | Date | Author(s) | Modifications / Remarks |
|---------|------------|-----------|----------------------------------|
| v-0.3 | 26.11.2021 | GA, SJ | Translation |
| v-0.15 | 03.01.2023 | SJ | Revision screenshots and wording |
| | | | |
| | | | |
| | | | |
| | | | |
| | | | |
| | | | |



CONTENTS

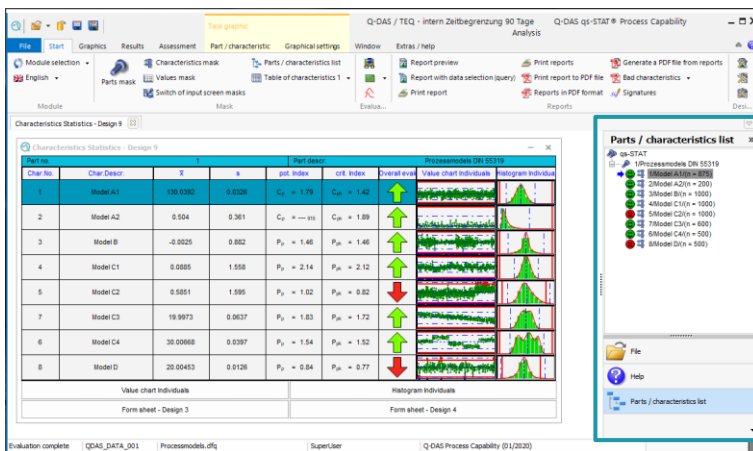
| | | |
|----------|--|----------|
| 1 | The assistant in the Q-DAS applications..... | 4 |
| 2 | Configuration distribution of the assistant | 6 |
| 3 | Configuration of the assistant..... | 6 |
| 3.1 | Display of the assistant..... | 7 |
| 3.2 | Show button bars in the assistant | 8 |
| 3.3 | Show fields "File" / "Help" / "Parts / Features list" in the assistant | 10 |

1 The assistant in the Q-DAS applications

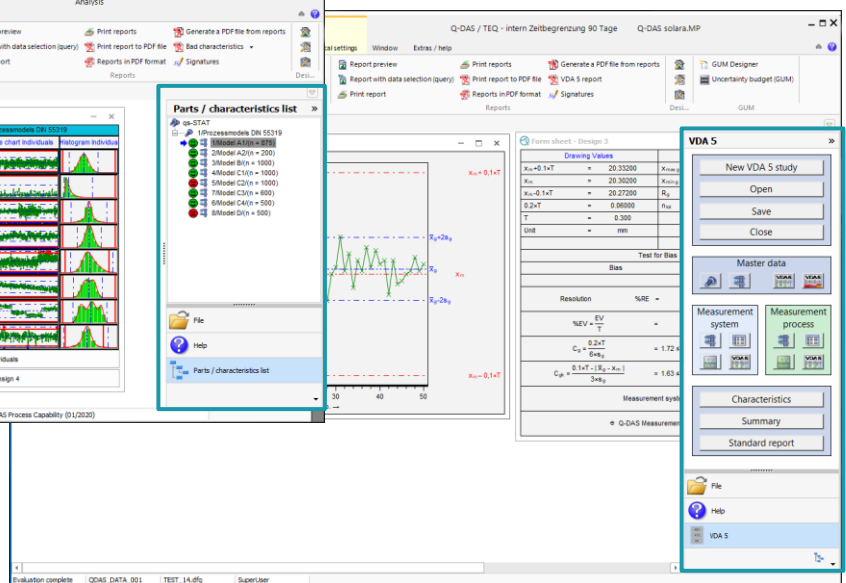
The assistant helps the user to handle data sets and provides relevant help topics in one view. The assistant offers the option of selecting the most recently opened files, import functions, relevant help topics, the current "parts / characteristics list" and user-specific button bars.

Since version 12, the assistant has been active by default for new installations and is displayed on the right-hand side of the application. In the classic qs-STAT, the "Parts / Characteristics List" is preset. In the VDA5 environment in solara.MP, the button bar for quick work with the uncertainty calculation according to VDA5 is shown here.

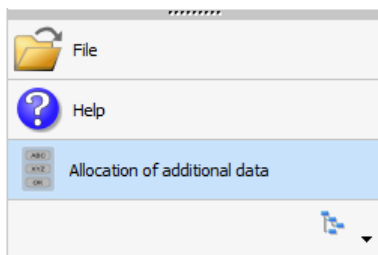
Assistant in qs-STAT



Assistant in solara.MP

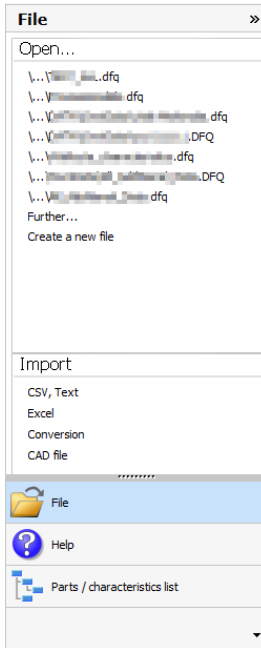


According to the tasks, the available functions are grouped into different functional areas. By selecting the fields, the buttons in the lower area, the content of the detail area of the assistant is changed.

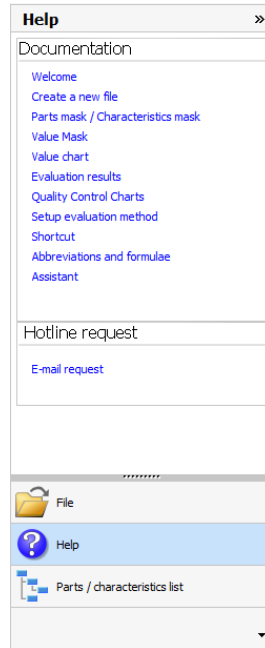


Content of the detail area in the assistant with different selection of fields.

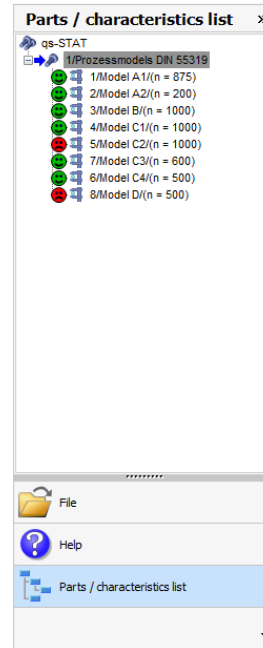
When selecting the "File" field.



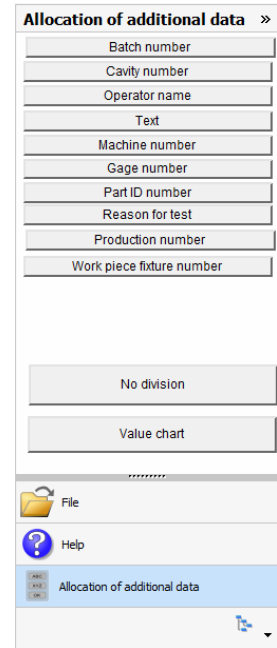
When selecting the "Help" field.



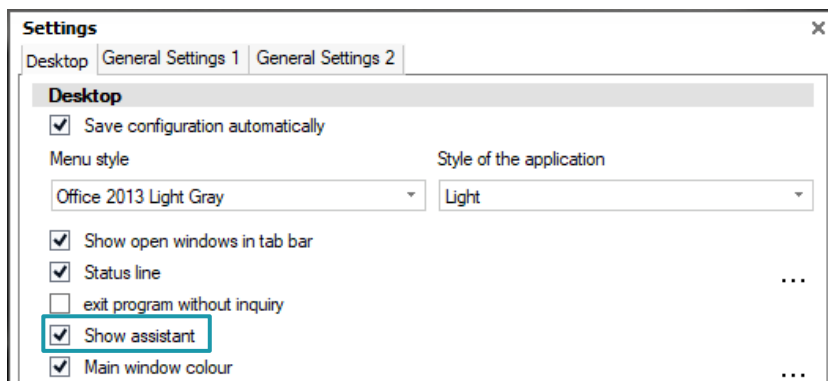
When the field "Parts / characteristics list" is selected and data set is loaded.



When selecting a button bar which was previously integrated in the assistant.



The assistant is activated or deactivated via the option "Show assistant" in the "Desktop" dialogue. The dialogue can be called up via the menu *File | Configuration | General Settings*.



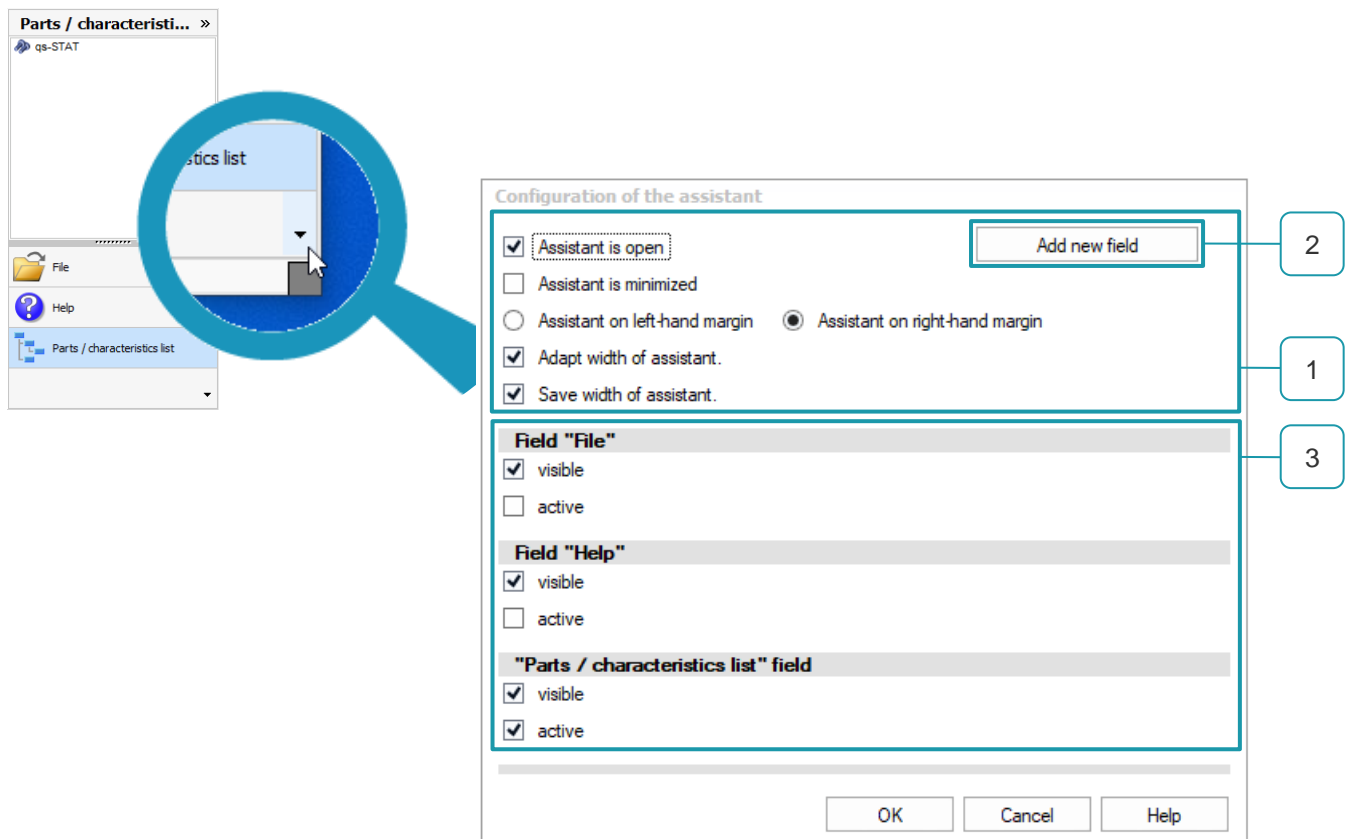
2 Configuration distribution of the assistant

The settings made in the assistant are stored in the configuration database in a user- and module-specific manner. The configuration distribution follows the inheritance according to the configuration management. Thus, the settings can be saved globally, user group-specific or user-specific.

If a button bar is integrated directly in a qs-STAT application, the path of the button bar configuration file is stored in the product INI for the workstation. The button bars integrated in the assistant are stored in the user profile according to the configuration distribution.

3 Configuration of the assistant

The dialogue for configuring the assistant is done by selecting the "Arrow" button in the footer of the assistant.



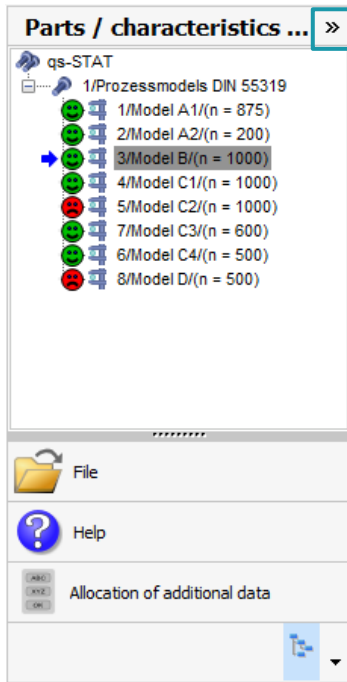
- | | |
|---|---|
| 1 | Display of the assistant. |
| 2 | Show button bars in the assistant. |
| 3 | Show fields "File" / "Help" / "Parts / Features list" in the assistant. |

3.1 Display of the assistant

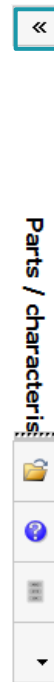
The assistant can be displayed minimised or maximised.

With the option "Assistant is minimised" activated, the start state of the assistant is minimised. The assistant can be minimised or maximised manually via the buttons in the upper right corner.

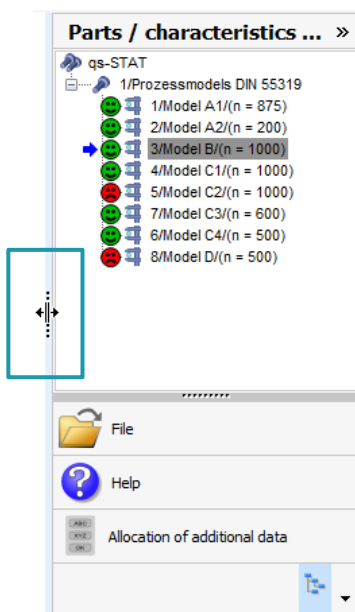
Maximised (folded out)



Minimised (folded in)

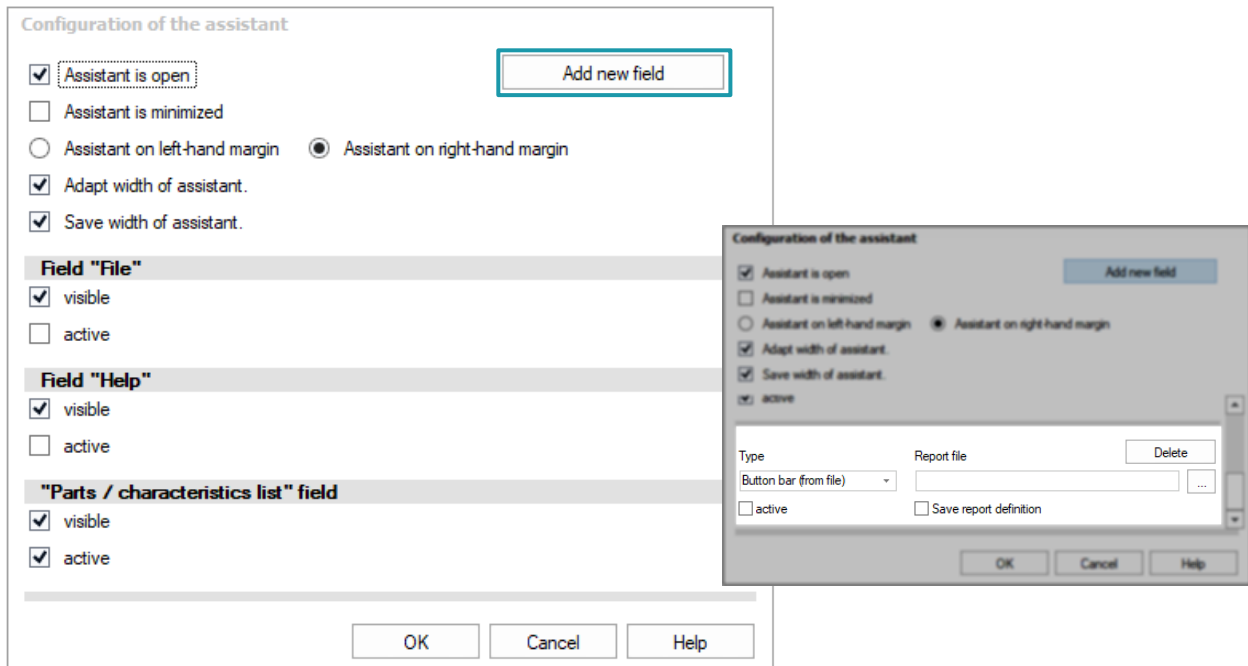


With the two options "Adapt width of assistant" and "Save width of assistant", the user can be allowed to change the width of the assistant and save it permanently.



3.2 Show button bars in the assistant

The button bars are integrated into the assistant via the "Add new field" button. The area available for displaying the button bars is predefined by the application. When adding several button bars, the symbols displayed are reduced.



Various elements are provided for integrating and managing a button bar in the assistant.

“Type” option

This configuration dialogue only allows the addition of button bar configuration files. Therefore, the entry "Button bar" is automatically preset under "Type".

“Report file” option

Click on the "..." button to open the dialogue for selecting a button bar configuration file. The dialogue searches for DEF files in the directory stored under *File | Configuration | Paths | Button bar | Definition files*. After selecting a DEF file and confirming with the "OK" button, the selected file name appears in the "Report file" field.

“Delete” button

An already integrated button bar can be removed from the assistant by selecting the "Delete" button.

“active” option

The option "active" determines which content is displayed as the default in the assistant. If the option "active" is set for a button bar, this button bar is automatically displayed in the assistant after starting an application.

“Save report definition” option

By activating this option, the information from the button bar configuration file is transferred to the configuration database. In this case, the stored path only serves as a note. The actual configuration of the button bar is taken from the configuration database.



The configurations made in the "Configuration of the assistant" dialogue are saved in the configuration database. This means that the same assistant content is displayed to the current user for the currently used module on every PC that uses the same configuration database.

If the option "Save report definition" is not activated, the information from the button bar configuration file (DEF file) is used to display the button bar. In this case, the path of the DEF file from the configuration database is used. This is a dynamic integration of the button bar. Every change to the DEF file is applied to the assistant. This means that access to the button bar configuration file is required. This is standard for a server-client deployment. The advantage is that all users receive the changes to the button bar configuration file at the next start.

If the option "Save report definition" is activated, the information from the button bar configuration file is copied into the configuration database. This is a static integration of the button bar. This provides a certain protection against unconscious manipulation.

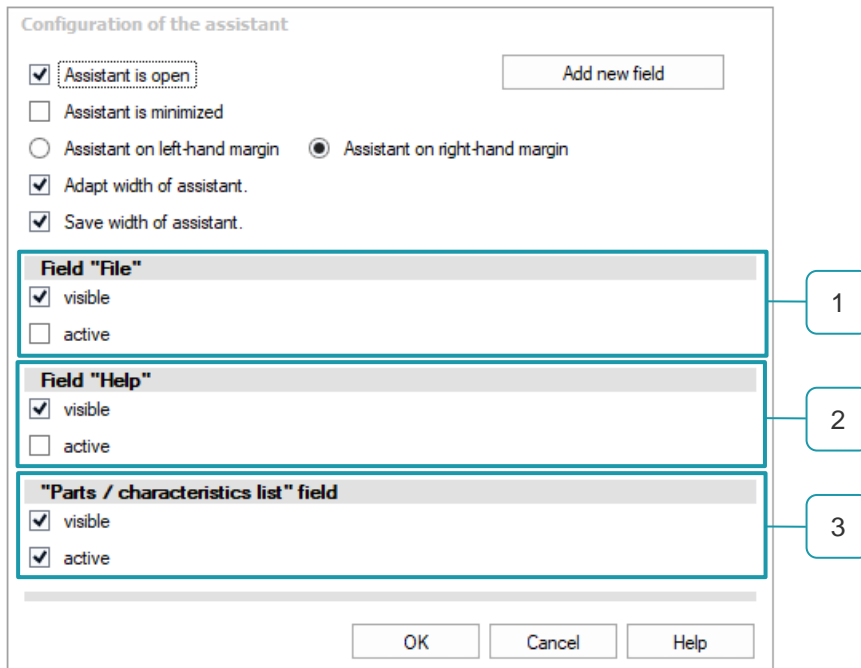


Updating the configuration changes in a statically integrated button bar is not provided by a Q-DAS application. If an update is required in this application, the button bar must be deleted from the assistant and the modified button bar configuration file must be integrated again.

With each new major version, the syntax used to save a button bar has been further developed, especially regarding the "Database selection buttons". It is recommended to update the button bars in case of a major update. To do this, save the button bar in the new version.

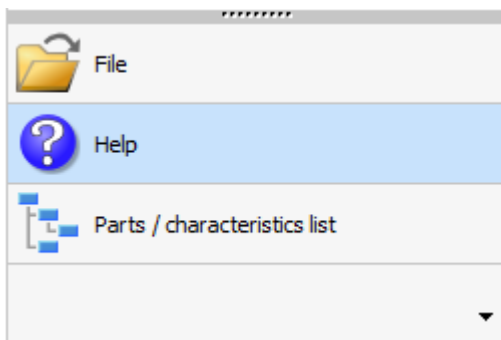
3.3 Show fields "File" / "Help" / "Parts / Features list" in the assistant

In addition to the button bars, three other function areas are available in the assistant.



“visible” option

Setting the option "visible" specifies which function areas are available for selection in the assistant after starting the Q-DAS application. By activating the option for one of the fields, the button of the corresponding function area is available for manual selection in the assistant.

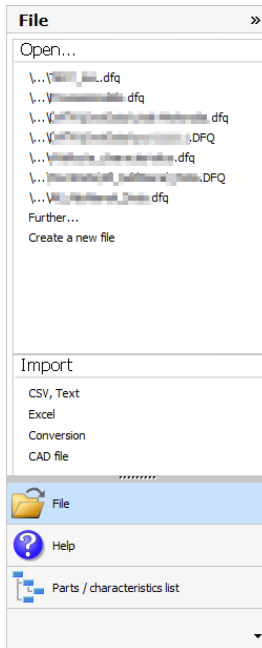


“active” option

By setting the option "active", the selected function area is shown as a default setting in the detail area of the assistant.

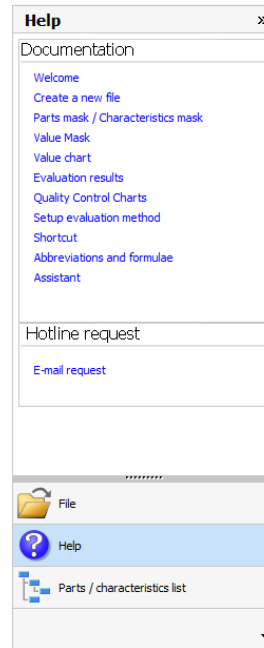
“File” field

This functional area contains the last opened files, the options "Open file" and "New file" as well as the quick access to csv/Excel import and conversions.



“Help” field

This window area contains the quick access for help.



“Parts / Characteristics List” field

This functional area contains the "parts / characteristics list" of the loaded data set.

